

Breckenridge Technology Center

908 S 8th St, Louisville, KY 40203



Listing ID: 30036369
Status: Active
Property Type: Office For Lease
Office Type: Flex Space, High-Tech
Contiguous Space: 2,100 SF
Total Available: 2,100 SF
Lease Rate: \$6 - 14 PSF (Annual)
Base Monthly Rent: \$1,050 - 2,450
Lease Type: Net Lease
Loading: 1 Dock, 1 Door
Ceiling: 9 ft.



Overview/Comments

Outstanding historic building with a very sophisticated and advanced interior.

Space may be leased raw "as-is" or built-to-suit. Landlord has acquired additional parking, making this an outstanding opportunity for a large employer seeking abundant parking. The space is amazing with soaring ceilings, exposed brick and walls of new windows and ready for custom build-out. Just 2 blocks from downtown, this opportunity can't be missed.

More Information Online

<http://ganthill.catylist.com/listing/30036369>

QR Code

Scan this image with your mobile device:



General Information

Tax ID/APN: 029E01110000
Office Type: High-Tech, Flex Space, Office Building
Zoning: EZ-1 - Enterprise Zone District

Building Name: Breckenridge Technology Center
Gross Building Area: 65,000 SF
Core Factor: 5%

Available Space

Suite/Unit Number: 200
Space Available: 2,100 SF
Minimum Divisible: 2,100 SF
Maximum Contiguous: 2,100 SF
Space Type: Sublet

Date Available: 02/01/2017
Lease Rate: \$6 - 14 PSF (Annual)
Lease Type: Net Lease
Parking Spaces: 0

Area & Location

Highway Access:	Easy access to I-64 just 2 miles North of Subject	Site Description:	Flat lot sithe paved surface parking. Subject is on the fringe of the CBD
Airports:	Louisville International	Area Description:	Subject is located on the Roy Wilkins Pkwy which is the gateway to the city's CBD

Building Related

Total Number of Buildings:	1	Loading Doors:	1
Number of Stories:	5	Loading Docks:	1
Year Built:	1900	Passenger Elevators:	0
Year Renovated:	2007	Freight Elevators:	0
Roof Type:	Flat	Heat Source:	Central
Construction/Siding:	Brick	Air Conditioning:	Package Unit
Exterior Description:	The Historic Brick facade welcomes guests from the generous paved parking lot.	Internet Access:	Cable, DSL, T1/T3
Parking Ratio:	4 (per 1000 SF)	Interior Description:	Sophisticated, high tech interiors provide a professional ambiance for guests and building occupants.
Parking Type:	Surface		
Ceiling Height:	9		

Location

Address:	908 S 8th St, Louisville, KY 40203
County:	Jefferson
MSA:	Louisville/Jefferson County



Property Images



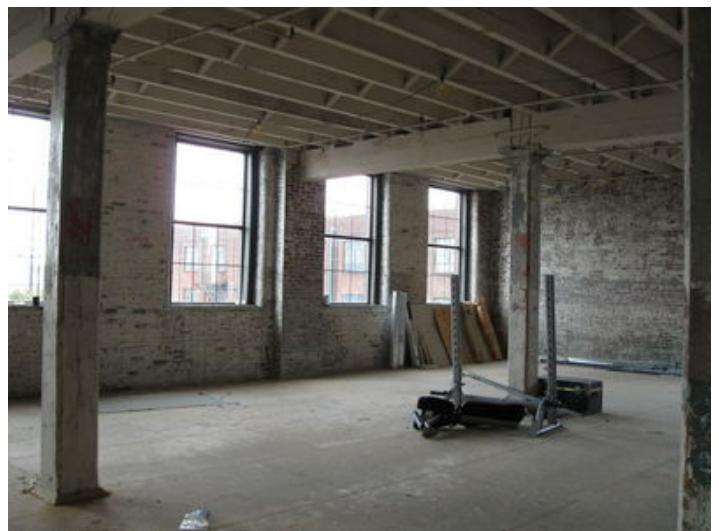
BTC 2



BTC 3



BTC 4



BTC 5

Property Contacts



Jim Harbolt

Gant Hill & Associates, LLC
502-777-7869 [0]
jim@ganthill.com