



Let LICHTEFELD handle the business of building while YOU handle building your business!



WDRB - FOX 41 - WMYO

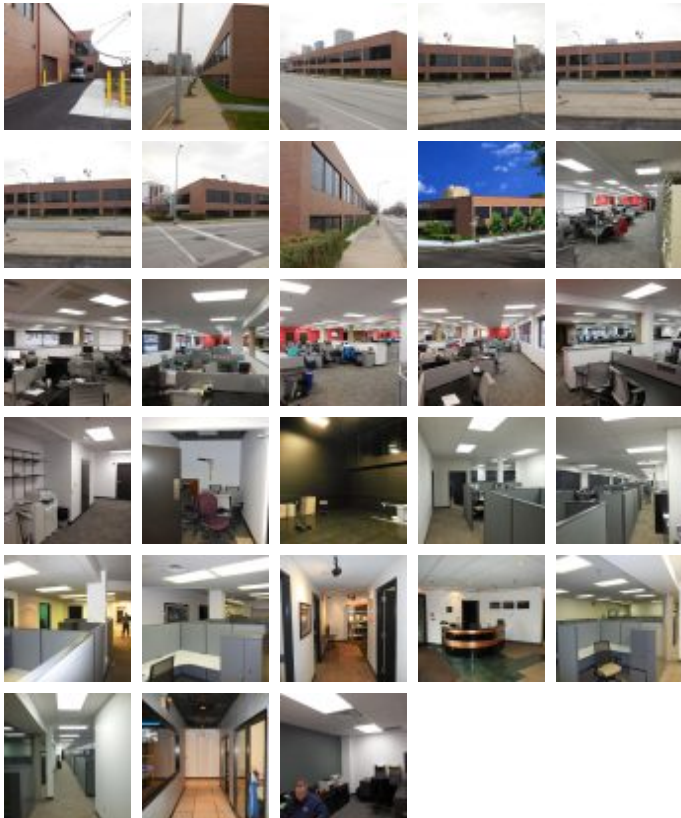
Office Buildings

Square Feet : 11,664 s.f.

Project Location : 624 W. Muhammad Ali Blvd. -
Louisville, Kentucky 40203

Construction Dates : 8-1-13 thru 3-30-14

End User : Independent Television Station



11,664 s.f. 2 story office/studio addition. Conventional steel super structure/bar joist metal pan concrete deck second floor, bar joist metal deck roof structure, insulated TPO roof, metal stud walls, sheathing, brick veneer, store front glass, all insulated, all new connected to current TV station. There will be 5,815 s.f. of interior renovation of the existing building. All designed and built by LichteFeld, Inc. partnered with Mike Prindle.



10/04/2022

WDRB - Fox 41 - WMYO - Lichtefeld Incorporated

