



Let LICHTEFELD handle the business of building while YOU handle building YOUR business!



# MALIBU JACK'S (INDOOR FUN CENTER)

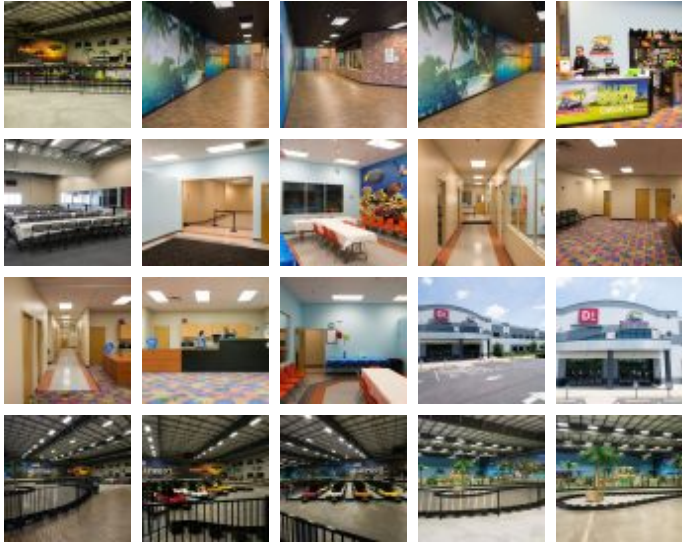
## Recreational Facilities

Square Feet : 85,000 s.f.

Project Location : 12101 Sycamore Station Pl, Louisville, KY

Construction Dates : 11-2015 to 4-2016

End User : Malibu Jack's



This was an existing basketball facility that had to be gutted, demolished, and wiped clean on the inside. The wood basketball floors were sunk into the concrete floors and had to be removed. The sunken floors had to be infilled with new concrete leveling all out for Malibu Jack's new indoor recreational concept. This 85,000 s.f. Butler building with concrete hard wall systems, storefront glass, hollow metal doors, overhead doors, some offices were have to be totally remodeled. HVAC, electrical, and plumbing as well for the installation of miniature golf, go-carts, arcade, party rooms, jungle gyms, spin cars, food courts, and jumping inflatables, as well as laser tag. The project was a fast track project and had to be orchestrated with the many different companies that had to come in and install their given specialty items.

LichteFeld, Inc. had 6 months with penalties if not completed on time. Extreme coordination with owners and contractors took place orchestrating the condensed schedule working weekends to complete the project. The project finished early and all deadlines were made for the May 2016 opening.



08/13/2022

Malibu Jack's (Indoor fun center) - Lichtefeld Incorporated



Kentucky One Health/D1 leases 17,500 s.f. for special sports training inside as well.

Designed and Built by Lichtefeld, Inc