



BELLA PELLE DERMATOLOGY

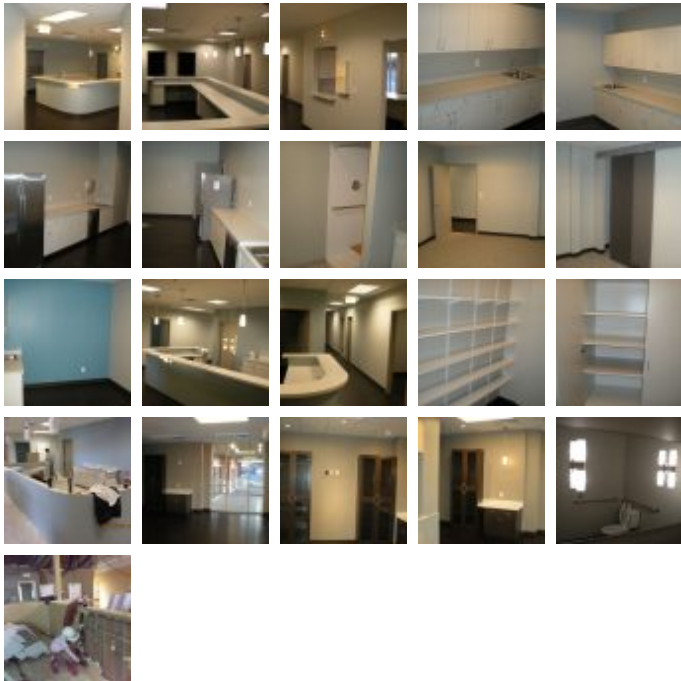
Medical Projects

Square Feet : 5,300 s.f. (approx)

Project Location : 3594 Springhurst Blvd. Louisville, KY 40241

Construction Dates : 12-13-13 to 2-21-14 (70 days)

End User : Medical Dermatologist



5,300 s.f. interior demolition and total interior remodel for Bella Pelle Dermatology located in Sprinhurst within Kaden Properties strip shopping center. This project has 6 exam rooms, three restrooms, two lobby's, four offices, two labs, a conference room, a facial room, nurses stations, and reception area. Lichtefeld, Inc. teamed up with Swope design for the design build project. This project was a fast track interior fit up 70 days from start to finish. Offices are scheduled to open the first week of March 2014. Project completed on time and the Doctor. opened the doors for business 2-4-2014.

Project designed and built by Lichtefeld Inc. partnered with Berry Prindle and Associates

